



Guide Price
£200,000
Leasehold

Brunswick Square, Hove

- STUDIO FLAT
- UNDER FLOOR HEATING
- BRUNSWICK CONSERVATION AREA
- NO ONWARD CHAIN
- RECENTLY REFURBISHED THROUGHOUT
- IDEAL INVESTMENT, CURRENTLY LET FOR £1 100 PCM

GUIDE PRICE: £200,000 - £225,000

Robert Luff & Co are delighted to bring to market this recently renovated, studio flat in this attractive grade I listed regency building. Brunswick Square is conveniently located in central Hove between Hove seafront/ promenade and Western Road where there is an access to all local amenities. Brighton & Hove Mainline Stations with their comprehensive commuter links including London Victoria and Gatwick airport are nearby along with local bus services which extend across the city.

T: 01273 921133 E:
www.robertluff.co.uk

**Robert
Luff & Co**
Sales | Lettings | Commercial



Accommodation

Entrance Hall

Studio Room 15'2" x 15'1" (4.63 x 4.61)

Laminate flooring, large original sash windows with shutters, cornicing, access to kitchen area, underfloor heating

Kitchen Area

Space for all appliances, built in oven with induction hob, sink with drainer

Shower Room

WC, vanity sink unit, walk in shower, extractor

Agents Notes

Tenure: Leasehold

Maintenance Fee: £1070.80 Per Annum

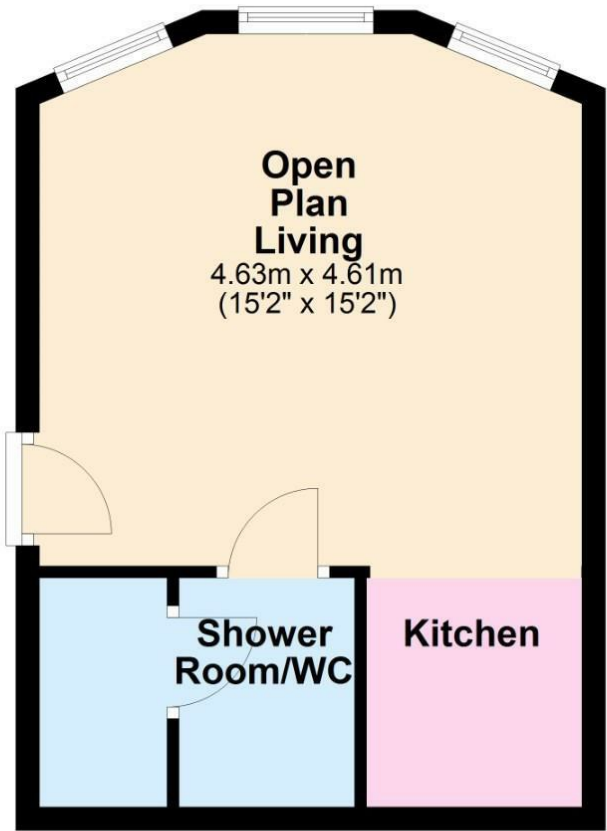
Ground Rent: £100 Per Annum

EPC Rating: E With Potential For C

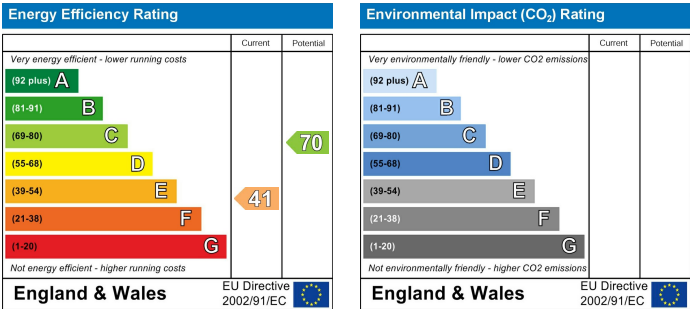
Council Tax Band: A



Floor Plan
Approx. 29.5 sq. metres (317.6 sq. feet)



Total area: approx. 29.5 sq. metres (317.6 sq. feet)



The information provided about this property does not constitute or form any part of an offer or contract, nor may it be regarded as representations. All interested parties must verify accuracy and your solicitor must verify tenure/lease information, fixtures and fittings and, where the property has been extended/converted, planning/building regulation consents. All dimensions are approximate and quoted for guidance only as are floor plans which are not to scale and their accuracy cannot be confirmed. References to appliances and/or services does not imply that they are necessarily in working order or fit for the purpose.